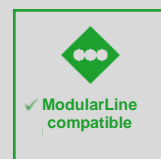
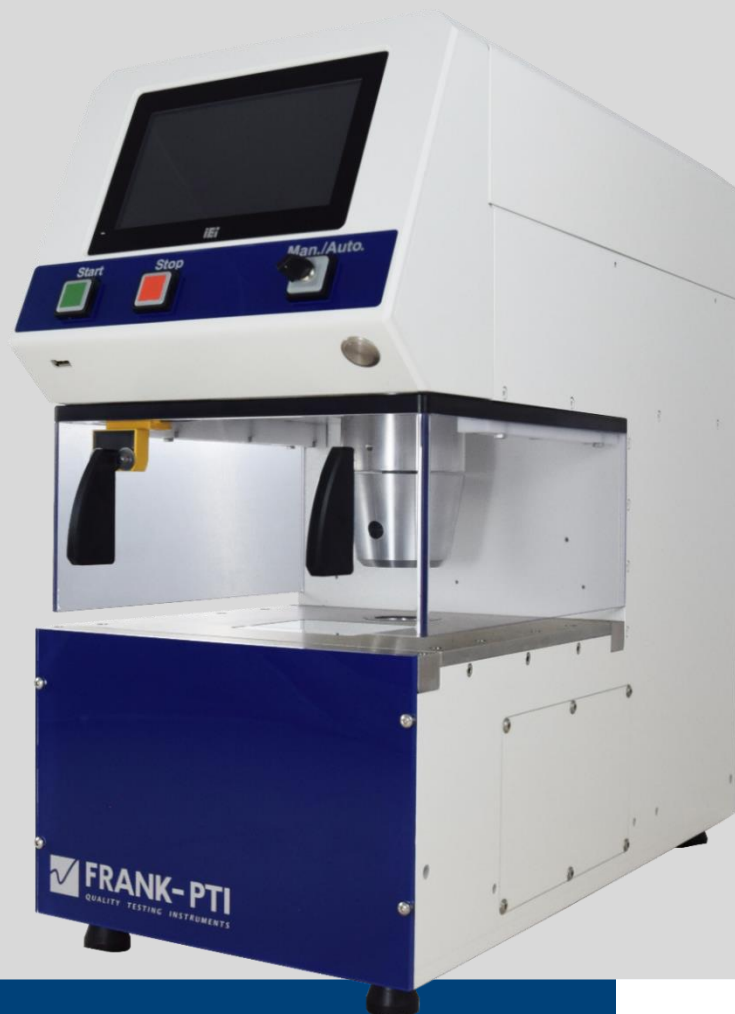


Modular Line

PPS-Parker Print Surf Roughness Tester

For:

For Measuring roughness according to the Print Surf method



MOST IMPORTANT BENEFITS:

- ✓ Easy operation via touchscreen or single buttons
- ✓ Automatic and manual testing process
- ✓ 2 versions available
 - Standard with one regular head – Measuring from below.
 - Version with upside down head – Measuring from above.
- ✓ Adjustable contact pressures:
490, 980 and 1960 kPa
- ✓ Compensation of the barometric pressure

 **FRANK-PTI**
QUALITY TESTING INSTRUMENTS

SUBSIDIARY OF  Hofmann

 **M.C. TEC**

Sales and service benelux

M.C. TEC
Distributiestraat 73
4283JN Giessen, Netherlands
Phone: +31 0183 445050
www.mctec.nl | info@mctec.nl

PRODUCT DESCRIPTION

The print surf method is a technique for determining the surface roughness of coated or calendered papers. It is also used on newsprint paper. The ModularLine PPS roughness measurement device operates, as with other techniques, using the air leak method. It has a very precisely manufactured measurement head as well as outstanding measurement technology. The throughflow is determined using two sensors, guaranteeing reliable and highly accurate measurement results across the entire area. The configuration with two measurement heads allows the upper and lower surface of the sample to be measured at the same time.

TEST DESCRIPTION

The sample is pressed against the measurement head at a defined pressure of 490, 980 or 1960 kPa. A pressure regulation system creates a pressure differential at the measuring mechanism of 19.6 kPa. The flow through is determined using the integrated sensors. The results are then calculated according to the formula required by the standard. Measurement areas smaller than 1 μ are automatically measured with an additional sensor for limited throughflow. This leads to a significant increase in accuracy and stability of the results, even in small areas.



PPS with safety cover and switch

Technical Data

DEVICE / INSTRUMENT

- Easy to use via touch screen
- Separate start and stop button
- Compensation of the barometric pressure
- Compatible with ProbeNet
- Can be used as ModularLine module

Protection class: 2
Protection degree: IP44

APPLICABLE STANDARDS

DIN ISO 8791-4
ISO 8791-1t
TAPPI T555
*more standards available

MEASURING

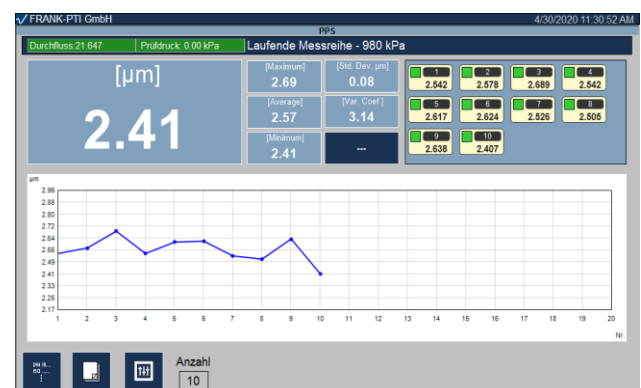
Measuring area:	0,5-8 μ m
Results:	roughness (=depth of r.) in μ m
Measuring accuracy:	\pm 1% of displayed value
Pressure difference:	\pm 0,005kpa linear
Flow through:	\pm 0,5% of final value
Measuring time:	approx. 4 sec
Repeatability:	\pm 0,2 μ m
Reproducibility:	\pm 0,4 μ m

Connections

Power	110-230V / 50-60Hz
Power consumption	<80 W
Water:	no
Compressed air:	6 bar connection for hose 6mm

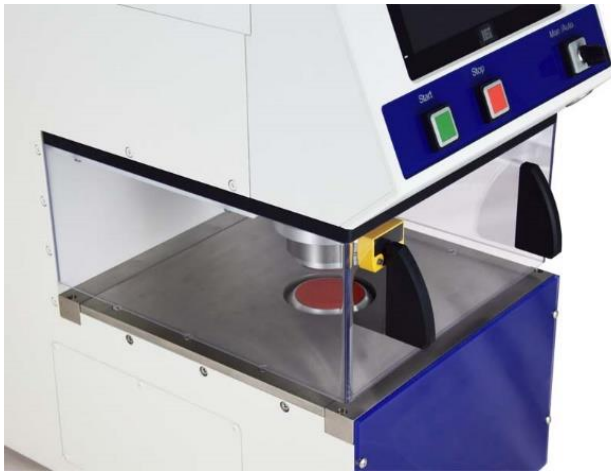
DATA

RS232:	Data output
Ethernet:	Data output. / MQTT
USB:	Updates / service



Measuring overview with single values, statistics and graph

Article No. S62600



PPS with inserted soft backing disc

DIMENSIONS

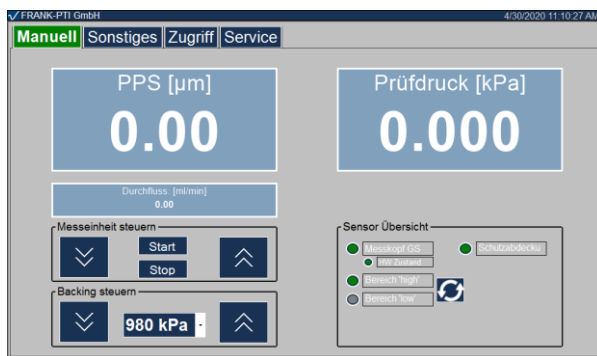
Version S62600001/2	L x H x W 270 x 590 x 570 mm
Weight S62600001/2	53kg / 70kg

ARTICLES / MODELS

- S626000001 ML PrintSurf (PPS) Roughness Top side
- S626000002 ML PrintSurft (PPS) Roughness Bottom side
- * more versions and sensors on request

Available Accessories:

- S626001002 Soft Backing Disc 1 pcs
- S626000003 Hard Backing Disc 1 pcs
- S406900001 ProbeNet Software inclusive one licence
- *Requirements explained on request



Program view - manual mode



Hard Backing Disc and Soft Backing Disc
(left to right)