

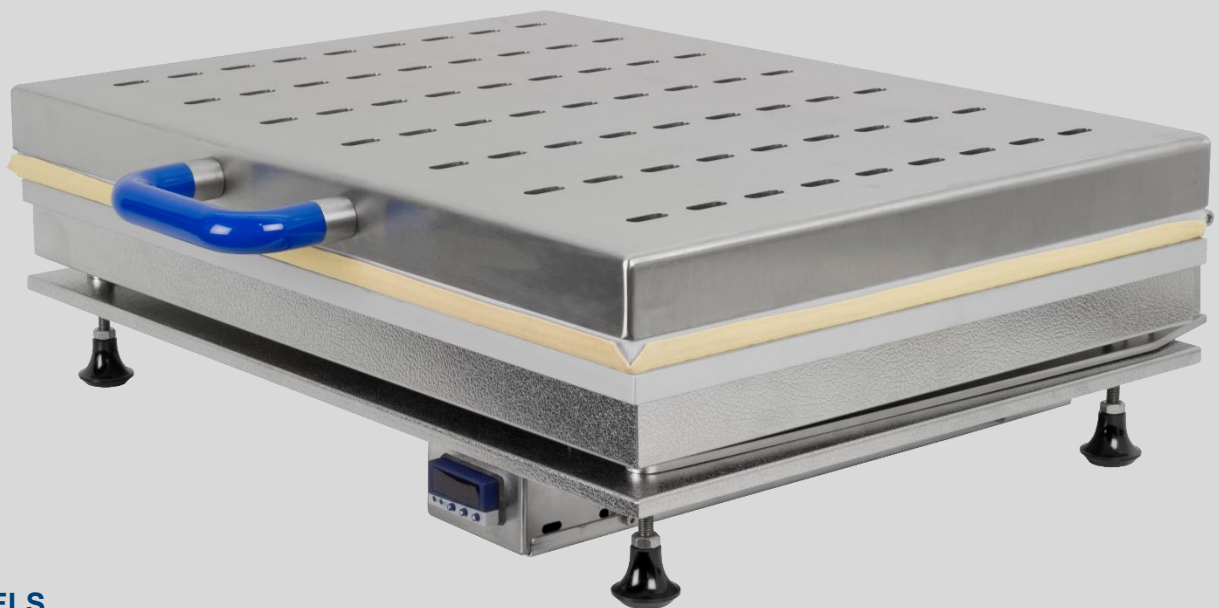
Article No. S40150



Pulp Tester

# Speed Dryer

For the quick drying of pulp and hand sheets.



## MODELS

S401500001: 350 x 350 mm plate size  
S401500002: 580 x 430 mm plate size

## MOST IMPORTANT BENEFITS:

- ✓ Special heating plate with equal heat distribution
- ✓ Rapid drying of hand-sheets according TAPPI or SCAN
- ✓ Temperature adjustable up to 180°C

 **FRANK-PTI**  
QUALITY TESTING INSTRUMENTS

SUBSIDIARY OF  *Fof Hansson*

 **M.C. TEC**

**Sales and service benelux**

M.C. TEC  
Distributiestraat 73  
4283JN Giessen, Netherlands  
Phone: +31 0183 445050  
[www.mctec.nl](http://www.mctec.nl) | [info@mctec.nl](mailto:info@mctec.nl)

## PRODUCT DESCRIPTION

The speed dryer consists of a robust stainless steel lower part with fitted hotplate and a safety cover. The hot plate can be set to any temperature between 0 and 180 °C. The speed hot plate is heated from below and maintains its temperature with a maximum deviation of  $\pm 1$  °C. The inner side of the cover is covered with a special heat resistant and air permeable fabric, which guarantees exceptional steam discharge. The cover ensures good pressing of the dry material and prevents excessive heat radiation, which minimizes power use.

## TEST DESCRIPTION

Laboratory sheets (sheet machine according to TAPPI and SCAN) or other samples are placed on the preheated plate. The cover is closed and drying starts. The weight of the cover holds the sample flat during the drying process.

## TECHNICAL DATA

### DEVICE / INSTRUMENT

- With equal heat distribution
- Temperature adjustable ( $\pm 1$  °C max. deviation)
- Control module with digital display
- Special cloth for excellent water vapor sissipation
- Dryer temperature upt to 180°C

### APPLICABLE STANDARDS

TAPPI T205

### CONNECTIONS

Electrical connection:	230V / 50-60Hz 10A internally fused
Power consumption:	<2500W
Water connection:	No
Compressed air:	No

### DIMENSIONS

Version	L x H x W
S40150001	450 x 180 x 350 mm
S40150002	530 x 180 x 580 mm
<b>Weight:</b>	Net
S40150001	20 kg
S40150002	25 kg

### ARTIKEL / MODELLE

S40150001	Speed Dryer 350 x 350
S40150002	Speed Dryer 580 x 430



Model with a plate size of 350 x 350 mm



Adjustable heating plate with special alloy