



a  **KPM** ANALYTICS brand

 **M.C. TEC**



SAT 450

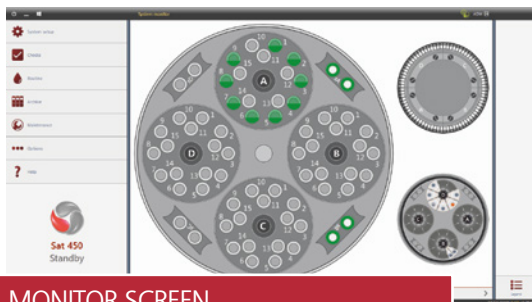
THE NEW GENERATION OF COMPACT
RANDOM ACCESS ANALYZER



The **SAT 450** is a fully automatic, random access analyzer, designed to support the modern laboratory in achieving improved cost efficiency, reduced rerun and manual handling. It provides quality results while following rigid quality system procedures and in strict compliance with regulatory agency requirements.

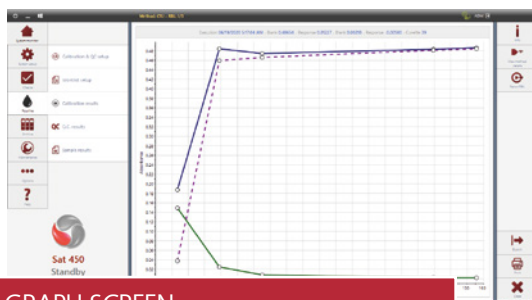
SIMPLICITY

& TECHNOLOGY



MONITOR SCREEN

- real time presentation of samples and reagents status;
- dynamic monitoring of test execution;
- analyzer detailed status with error messages, incubation temperature control, START, STOP, and PAUSE functions.



GRAPH SCREEN

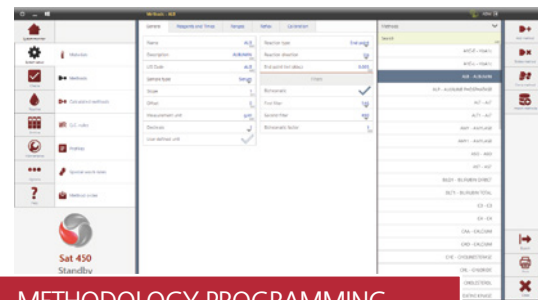
- display of test reaction curves;
- display of test calibration curves;
- Levy-Jennings and Youden QC statistic.



DIAGNOSTIC SOFTWARE

- each instrument part can be singularly tested;
- remote diagnostic capability.

The **SAT 450** operating software runs under multitasking Windows®. Its bright touchscreen software simplifies routine work and offers the operator a concise guide through the operating functions.



METHODOLOGY PROGRAMMING

- all parameters are completely user programmable up to 999 methods can be memorized and all settings are user programmable;
- user selectable pre-dilution and re-dilution ratio, samples re-run option and reflex test;

AUTOMATIC DETECTION

- end point limit
- substrate depletion
- fixed time and kinetic reaction linearity

MORE FEATURES

- multilanguage files (user programmable)
- bi-directional communication compliant with ASTM and CLSI standard
- automatic transmission of patients data and results through serial port or Ethernet
- reagents data traceability and management
- westgard rules management
- sampling order with Priority management
- possibility to compare current calibration with any previous calibration
- preventive maintenance management
- automatic startup and automatic shutdown procedures

COMPACT

SOLUTION

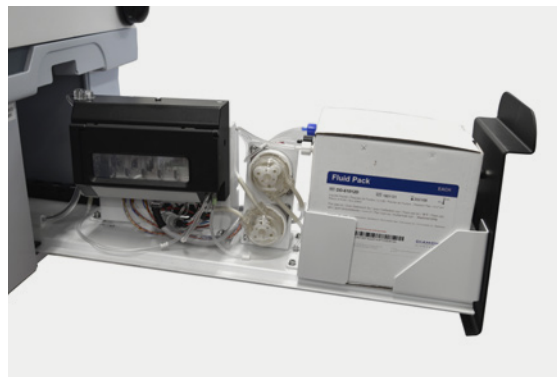
On board reagents

- Up to 64 reagents on 4 separate racks;
- additional 8 positions;
- on board storage at $8^{\circ}\text{C} \pm 12^{\circ}\text{C}$;
- barcode tracking of reagents (optional);
- possibility to close the system with dedicated reagents (optional).



New I.S.E. Module (OPTIONAL)

- Direct measurement of Sodium, Potassium and Chloride;
- easy access for reagents replacement;
- maintenance-free electrodes;
- low Fluids Pack consumption.



Practical design

Advanced technology and sophisticated engineering system, allows easy access for maintenance purposes by simply lifting up the entire light-weight analytical chassis.

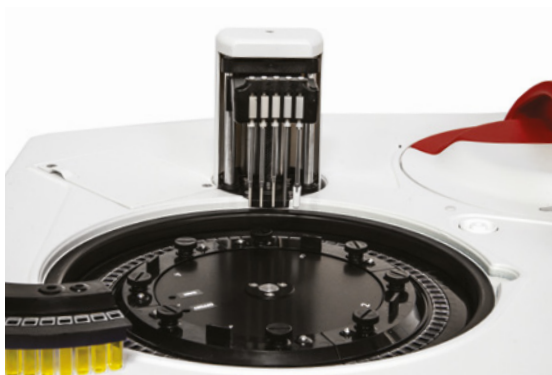




Simplicity, productivity, quality results

A single, heated level sensing arm with Shock Sensor minimizes mechanical complexity and rapidly moves to all positions for:

- optimized sample and reagent mixing;
- up to 4 different reagents addition to each method;
- sample pre-dilution;
- sample rerun with or without dilution;
- double probe washing between each sampling cycle;
- inner and outer probe washing after every cycle.



Cost Efficiency

80 long life, 6 mm optical path, semi-disposable cuvettes (4 separate racks with 20 cuvettes each) selective cuvettes wash with 3 different liquids:

- acid, alkaline and neutral;
- low water consumption: 1.8 l/h;
- 200 μ l minimum reaction volume;
- automatic cuvettes quality check.



Flexibility

- 4 universal racks for cups and primary tubes;
- continuous loading of up to 15 samples on each rack (serum, plasma, urine) thanks to dedicated lid;
- additional 8 positions;
- STAT samples loading allowed at any time;
- standards and controls can be placed on any available rack with no limitations;
- positive identification of samples (optional).

TECHNICAL SPECIFICATIONS

| | |
|------------------------------------|---|
| SYSTEM DESCRIPTION | Benchtop, fully automatic, random access, open analyzer for clinical and immunoturbidimetric assays |
| ASSAY TYPES | - end point, Kinetic, Differential, Bichromatic, Fixed Time and Immunoturbidimetric - up to 999 tests, all user programmable |
| ON-BOARD REAGENTS | Up to 72 reagents can be located into the refrigerated compartment and distributed on: - 4 removable racks - 50/20/5 ml containers can be loaded - 8 extra positions for 5 ml containers |
| SAMPLE LOADING | - 4 universal separate racks for continuous loading of samples, calibrators and controls thanks to a dedicated lid (new Main Cover Design) - each rack contains up to 15 cups and/or tubes 10-16 mm diam., 40-100 mm height - 8 extra positions for urgent samples, calibrators and controls - STAT sample execution is allowed at any time |
| THROUGHPUT | - 280 photometric tests/hour + 160 ISE/hour - up to 440 tests/hour (280 photometric tests/hour + 160 ISE/hour) |
| READING SYSTEM | - direct reading, dual channel photometer - 200 l minimum reading volume - 9 narrow band, automatically selected interferential filters 340, 380, 405, 492, 510, 546, 577, 620, 690 - halogen lamp 6V/10W - linear from 0.0001 to 4.200 Abs - high resolution (0.0005 Abs.) |
| SAMPLING PROCESS | One mechanical arm performs all sampling operations with: - level sensing system (capacitive) - new sampling probe with shock sensor - new reagent pre-warming system at 37°C - automatic probe washing - sample volume range: 2.0µl+ 99 µl (0.25 µl incr.) - reagents volume range: 0µl+ 350 µl (1 µl incr.) - sample pre-dilution - sample post-dilution - sample post-concentration |
| REACTION PLATE | Holds 80 cuvettes divided into 4 racks with 20 cuvettes each and performs the following operations: - automatic cuvettes washing - continuous monitoring of cuvettes quality - incubation temperature control at 37°C ± 0.3 |
| COMPUTER (minimum requirements) | - CPU i3 series 9 (or higher) - memory ram 8 Gb - hard disk 250 Gb - monitor 17" - communication USB and/or RS232 port - host communication RS232 or Ethernet - software Windows 10 or higher |
| OPTIONAL ACCESSORIES | - direct potentiometry New I.S.E. module for +Na,+K,-Cl - positive barcode readers for reagents and samples (code 128, codebar, code 2 of 5 interleaved, code 39) |
| INSTALLATION REQUIREMENTS | - power supply 90 ÷ 250 VAC, 47 ÷ 63 Hz - electric consumption 386 Watt - water consumption 1.8 l/h |
| DIMENSIONS | 107 x 68 x 53 cm (W x D x H) |
| WEIGHT | 49 Kg |
| ENVIRONMENT | - room Temperature 18°C ÷ 30°C - relative Humidity 20% ÷ 85% |



AMS Srl

Instruments and Reagents Factory, Sales & Customer Service

Via E. Barsanti 17/A

00012 Guidonia - Rome (Italy) Tel. +39 0774 354441

Sales and service benelux

M.C. TEC

Distributiestraat 73 | 4283JN Giessen, Netherlands

Phone: +31 0183 445050

www.mctec.nl | info@mctec.nl

www.amsalliance.com -

info.it@amsalliance.com